

NAME: _____

PRE/POST-VISIT ACTIVITY – Nursery Rhymes

DIRECTIONS: Words that rhyme have repeating sounds. Below are words that have the sound **-at** at the end of them. Write the correct letter that goes with each picture to complete the rhyme.



____ AT

M



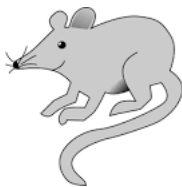
____ AT

R



____ AT

H



____ AT

C



____ AT

B

