

UPSIDE-DOWN CHRISTMAS TREES: LEGEND AND FACT

SIX
PROJECTS

Early American Life *Christmas*

traditions
period style
antiques
architecture
history

\$6.99

Christmas 2016
display until December 31



www.EarlyAmericanLife.com

House Built for Christmas
One House, 43 Decorated Trees
Pioneers' Holiday Feast
Centuries of Wooden Toys



HOLIDAY EVENTS

BY LAURA AMICK

CHRISTMAS AT JOANNA FURNACE

Nestled in Pennsylvania's Berks County, an area rich with iron ore, abundant woodland for charcoal, and waterways to provide power, Joanna Furnace symbolized the state's thriving early iron industry, producing iron from 1791 through 1898.

At Christmastime you can experience the spirit of the season as well as learn how the iron plantation operated. Interpreters in festive period attire will share stories about the many Victorian decorations adorning the candlelit Historic Mule Stable while they quill, embroider,

and fashion ornaments that will fill the giant cedar Christmas tree. In the kitchen, volunteer bakers will tempt you with the aroma of anise jumbles, ginger snaps, and home-baked bread.

Visit dozens of stands at the Christmas market behind the stable to purchase gifts and party items—ornaments, hand-carved Santas, hand-spun wool accessories, candles, and jewelry as well as Christmas cookies, candies, cakes, and cheeses. The outside market will open at 5 each evening.

You can walk the grounds along pathways lit by 1,000 glowing

candles in luminaries, or tour the plantation in an old-fashioned wagon ride. Then settle by the roaring bonfire and listen or join in the singing with Joanna's Carolers. The Ghost of Christmas Present will recount holiday legends.

You can also experience the Christmas story and make a public witness to the true meaning of the season as the Living Rock Bible Church in Elverson presents a live re-enactment of the Nativity of our Lord.

Christmas at Joanna Furnace, Geigerstown, will run from December 2-4, with Friday hours from 5 to 9 p.m. and weekend hours from 4 to 9 p.m. For information call 610.286.0388 or visit haycreek.org

YULETIDE AT WINTERTHUR

This season's decorations for Yuletide at Winterthur, the Delaware museum's annual Christmas display, will allow visitors to experience the holidays through the eyes of children from 1850 to 1950. Room displays throughout Henry Francis du Pont's home will highlight its collections of miniature objects.

The theme anticipates the unveiling of the McDaniel dollhouse, which is expected to delight visitors this season and for many more. The magnificent slate-roofed, fully electrified mansion-in-miniature (not so small at 6-feet, 4-inches tall and nearly 4 feet wide) came to Winterthur this summer, donated by Jack McDaniel, whose wife, Nancy, commissioned an English firm to custom-build the dollhouse in 1985.

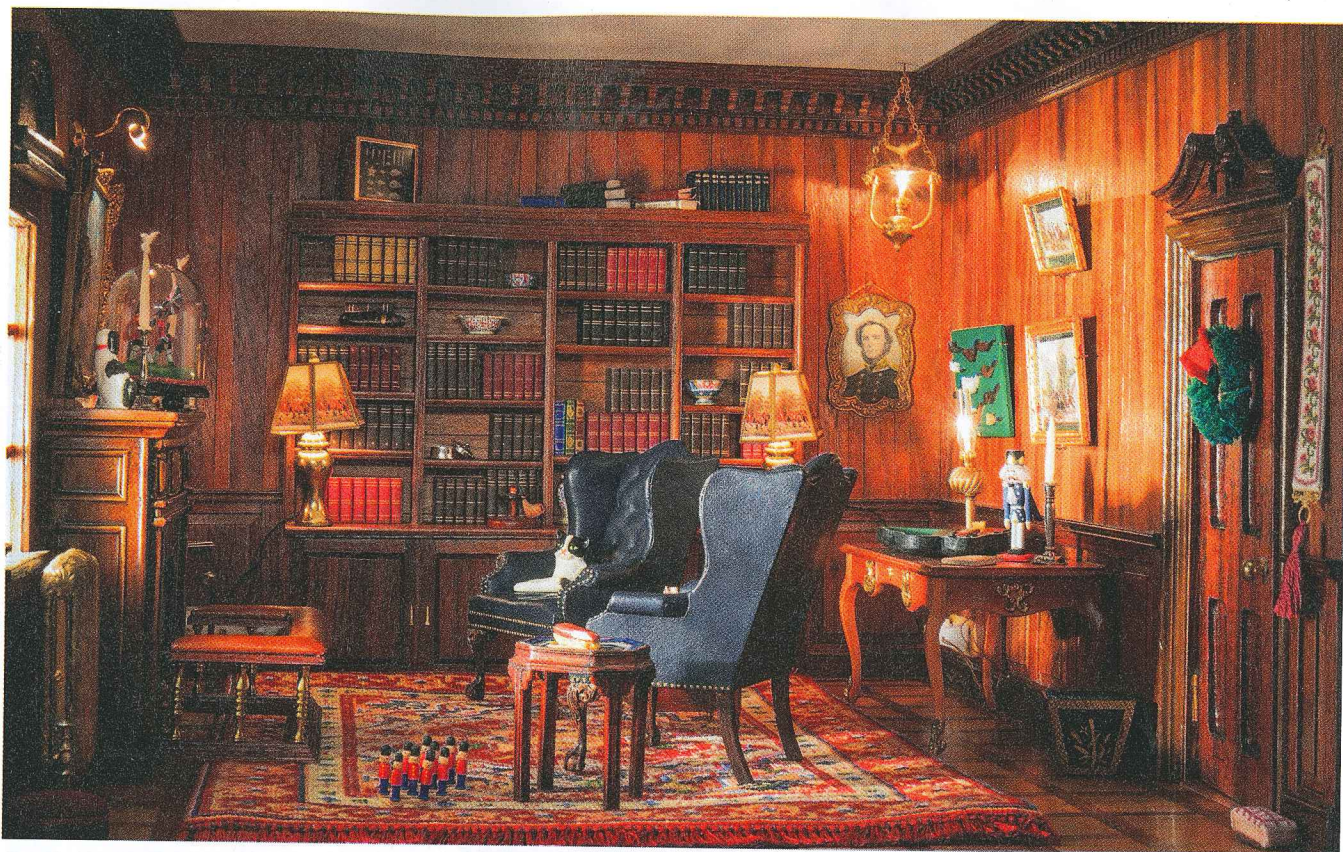
Nancy McDaniel, an interior decorator who operated her own home decorating and holiday design company, drew inspiration for her

Volunteers Marissa Martin, left, and Maryanna VerMulm prepare refreshments in the kitchen of the Historic Mule Stable at Joanna Furnace for the iron plantation's holiday events.



COURTESY OF HAY CREEK VALLEY HISTORICAL ASSOCIATION

COURTESY OF WINTERTHUR MUSEUM



The library in the McDaniel dollhouse at Winterthur is crafted in meticulous detail, from ornate crown molding to a broken-pediment mirror to tiny wooden soldiers marching across the fringed Oriental rug.

VAILLANCOURT
folk art *Made in America since 1984.*

SUTTON, MASSACHUSETTS
877-665-2244 | VALFA.COM